

## TELEVISION TECHNICAL BULLETIN

<u>MODELS</u>	56FW53H	66FW53H	66FW54H	76FW53H
	76FW54H			

### SPECIFICATION CHECKS

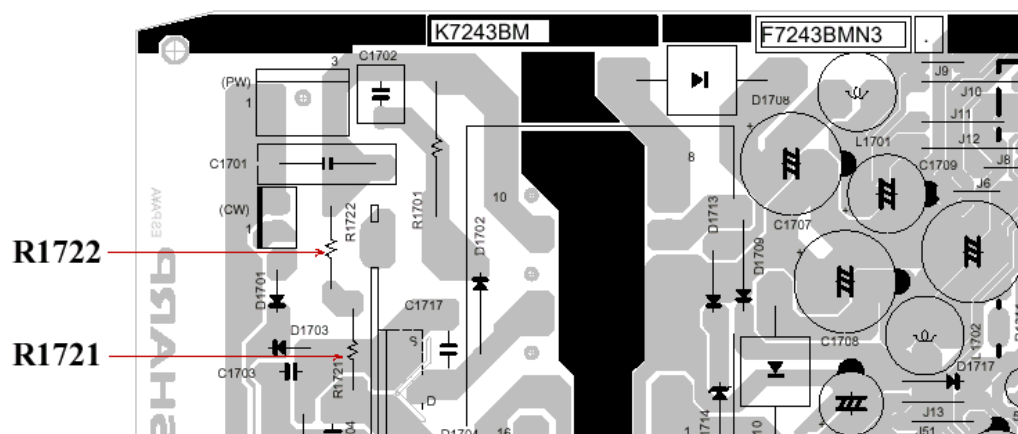
#### ACTION

In all cases check that the following components have been fitted or are correct.

1. Check to see if an avalanche diode (D735) has been fitted on the print side of the PWB, in parallel with the 150V HT reservoir capacitor, C720. If not, fit D735 in parallel with C720. Cathode to the positive plate of the capacitor.
2. Check that R713 and R714, located in the power supply, are 560kΩ ½W metal film resistors. If carbon resistors are fitted, replace both with the metal film type.
3. Check that R1721 and R1722, located on the Dolby PWB, are 560kΩ ½W metal film resistors. If carbon resistors are fitted, replace both with the metal film type.

Models produced after the following serial numbers have the resistors fitted.

Model	Serial Number
66FW54H	714595
76FW54H	714221



**Sharp Electronics (UK) Limited**

Reference PGJ18082000-1

Revision 4



White – Carry out as required

Yellow – Carry out as required and whenever the unit comes in for service

Red – Carry out on all units

4. Check that C746 has been fitted. If not, fit C746 at the points indicated in the diagrams below. L702 and L703 are located in the power supply.

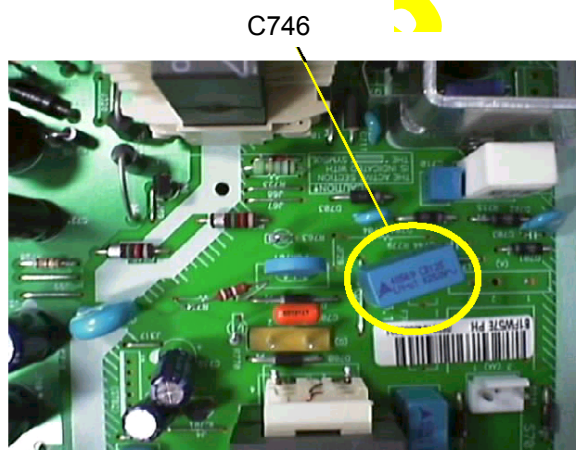


FIG.1

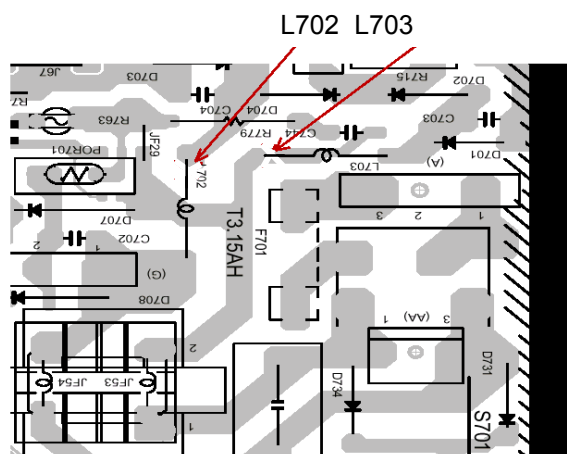
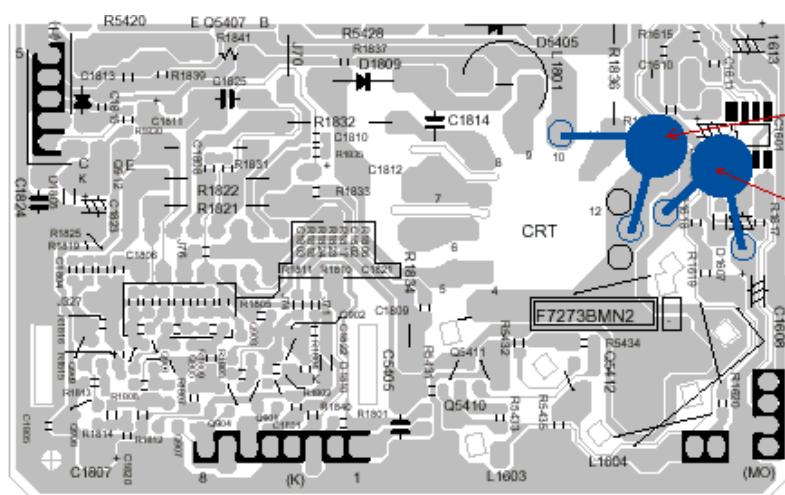


FIG.2

5. Check that C1826 and C1827 have been fitted to the CRT base PWB as indicated in the diagram below.

Models produced after the following serial numbers already have the capacitors fitted:

66FW53H	726200
66FW54H	714595
76FW53H	713664
76FW54H	714633



C1827: Between Pins 10 & 12 of the CRT base.

C1826: Q5411 collector to ground

**Sharp Electronics (UK) Limited**

Reference PGJ18082000-1

Revision 4



White – Carry out as required

Yellow – Carry out as required and whenever the unit comes in for service

Red – Carry out on all units

**TELEVISION TECHNICAL BULLETIN**

<u>REF NO</u>	<u>DESCRIPTION</u>	<u>PART NUMBER</u>	<u>PRICE CODE</u>
D735	Avalanche diode	RH-EX0875BMZZ	AD
R713/714	Resistor 560k $\Omega$ 1/2W metal film	VRC-MA2HG564J	AA
R1721/1722	Resistor 560k $\Omega$ 1/2W metal film	VRC-MA2HG564J	AA
C746	C Plast met 0.1 $\mu$ F 250V	RC-FZ0070BMZZ	AD
C1826	Ceramic capacitor 4.7nf 10% 500V	VCKYPA2HB472K	AB
C1827	Ceramic capacitor 10nf 20% 250V	RC-KZ0029CEZZ	AC

**NB** A specification up-date kit containing all the above parts is now available:

<u>REF NO</u>	<u>DESCRIPTION</u>	<u>PART NUMBER</u>	<u>PRICE CODE</u>
	Specification up-date kit	FWOPTOKIT2000	AH